



## Tank Side Indicator/ Controller, Series 139-TSIC

### FEATURES

- Real time indication of tank data.
- 2 line, 16 character back lit alphanumeric LCD display.
- Facility to operate servo gauge from tank grade.
- Optically isolated I/O.
- Flameproof enclosure.

Tank Side Indicator Controller (TSIC) is a remote indicator which can command servo gauge to perform routine operations. It displays tank data and alarm status at the side of the tank and can give commands to servo gauge with the help of a keymagnet. It does not require external power since power is derived from the servo gauge itself. It is provided with mounting arrangement suitable for 2" pipe.

### OPERATION

The Tank Side Indicator Controller is a microprocessor based instrument. It communicates with the servo gauge on a two way two wire RS485 link. It displays level, temperature and other data on the back lit LCD display. Two Hall effect sensors detect insertion of keymagnet into two blind key holes. One keyhole is for "MENU" selection while the other is for "ENTER" command. User can issue commands like displacer up-down, freeze, density measurement, level & interface level measurement and repeatability check etc. Page mode display scheme is employed. Display pages are user selectable. All external connections are surge protected. Signal lines are additionally opto isolated.

### CONSTRUCTION

The enclosure has two compartments viz., electronic compartment & terminal box. One cable entry, 1/2" NPT, is provided in the terminal box. The electronic compartment incorporates magnetic sensors to sense the insertion of the keymagnet. The two compartments are isolated from each other. Two blind holes are provided on right hand side of enclosure for giving commands through keymagnet.

### CERTIFICATIONS

CCOE Cert. No. – A/P/HQ/MH/104/2008 (P241135)  
Dated -10/12/2009 issued by CCE, Nagpur.



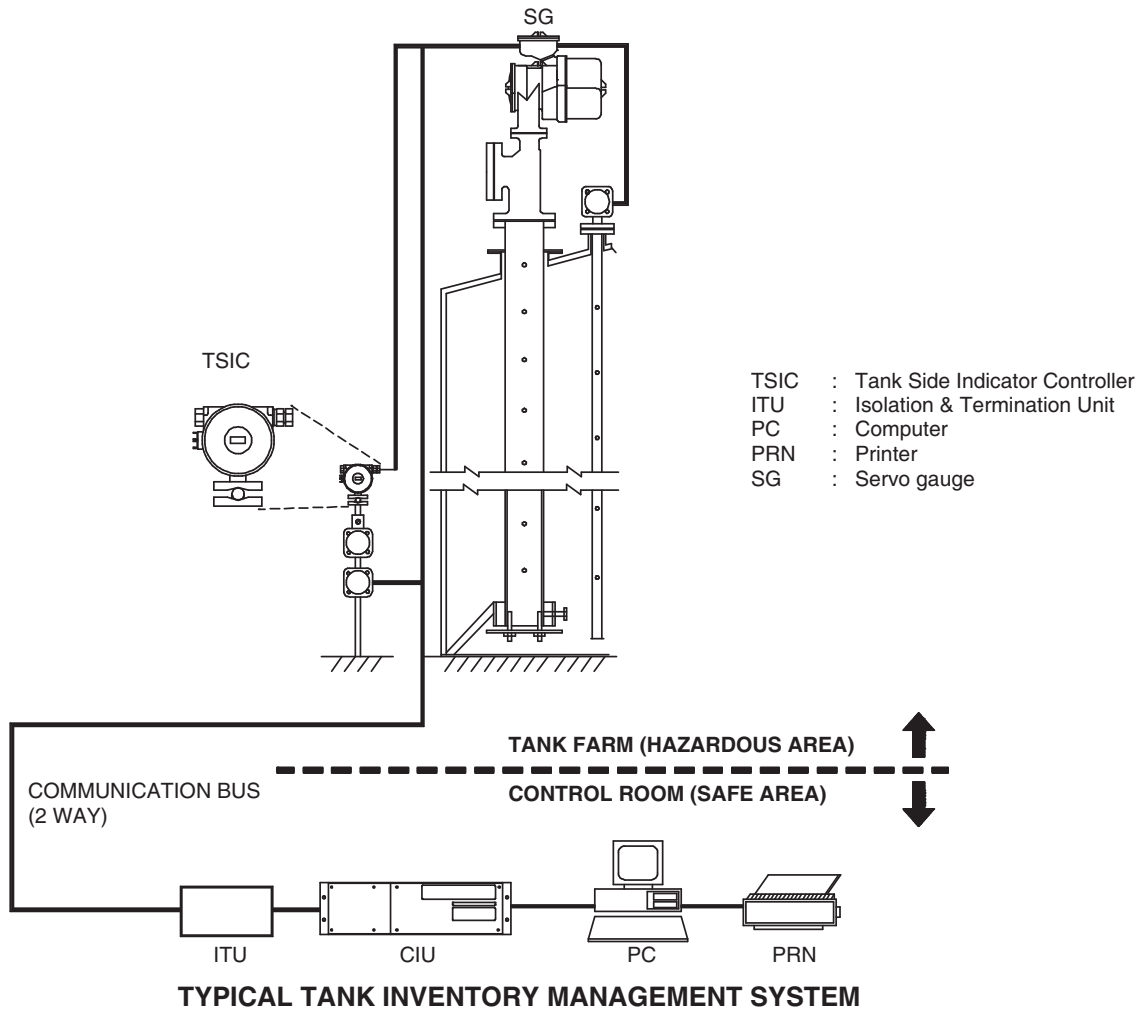
### SPECIFICATIONS

- Power  
22 VDC derived from servo gauge.
- Communication  
RS485 link (Upto 1.2 Kms.).
- Display  
1/4", 2 line, 16 character alphanumeric LCD display with back lighting.
- Baud rate  
1200
- Cable  
4 core 1 mm<sup>2</sup> copper (2 twisted pairs)  
(Upto 1.2 kms),  $R_{max} \leq 200$  ,  $C_{max} \leq 1\mu F$
- Cable entry  
1/2" NPT (F) (1 No.)
- Operating conditions  
Temperature - 0 ° C to 55 ° C  
Humidity - 95 % RH.
- Enclosure  
Aluminium alloy LM6, polyurethane painted  
Weatherproof to IP 66 as per IS:13346-2004
- Weight  
4 Kgs. approx.

### ACCESSORIES

Key magnets are given as standard accessory.

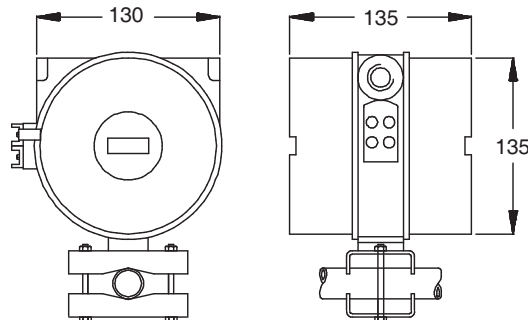
## GENERAL ARRANGEMENT



## ORDERING CODE

1 3 9 - 7 1 0 0

## DIMENSIONS



\*\*\* Continuous developments may necessitate various changes without prior notice. LF-139-0808 R04 12/2010 LF\_TankSideIndCtr\_139TSIC

### SBEM Pvt. Ltd.

H.O. : 39, Electronic Co-Operative Estate, Pune - 411 009 (India)  
 Tel. : 91-20-24220505, 24223375 Fax : 91-20-24215670  
 Email : sales@sbem.co.in, ho@sbem.co.in  
 Web : www.sbem-india.com

Works : Bibwewadi Industrial Estate, 691/A/2, Pune-Satara Road, Pune - 411 037 (India)

Office : Mumbai  
 Tel. : 91-22-27823601 / 03  
 Fax : 91-22-27823603  
 Email : sbemho@bom4.vsnl.net.in  
 mumbai@sbem.co.in

Chennai  
 91-44-24911235  
 91-44-24416947  
 chennai@sbem.co.in

New Delhi  
 91-11-26560647, 26969679  
 91-11-26969679  
 newdelhi@sbem.co.in

Pune  
 91-20-41030100  
 91-20-24215670  
 pune@sbem.co.in

#### • Our Product Range •

**Level Switches:** Float, Displacer, Capacitance, Conductivity, Vibration, Rotary Paddle  
**Level Transmitters:** Pulse Radar, Guided Wave Radar, Ultrasonic, Capacitance, Hydrostatic  
**Tank Gauging:** Servo, Float & Tape, Magnetostrictive, Float & Board, Tubular, Reflex, Transparent  
**Flow Meters:** Electromagnetic, Ultrasonic



ISO 9001: 2008