



Gasquant

Liquid Inventory Management System for LPG Plants

Gasquant System

Gasquant Liquid Inventory Management System is complete stand-alone system for LPG storage installations with Bullets or Mounded Vessels.

The system uses Digital Level Probes (DLP) type 134-TM Magnetostrictive type with 134-H Indicator unit and / or High Pressure 134-TL Advanced Capacitance. The probes have built in temperature sensors. These probes measure the Level and Temperature of the product in the vessels. The Vapour Pressure is measured by a HART® Pressure Transmitter fitted on the vessel. All the instruments are daisy-chained, making the cabling simple and economical.

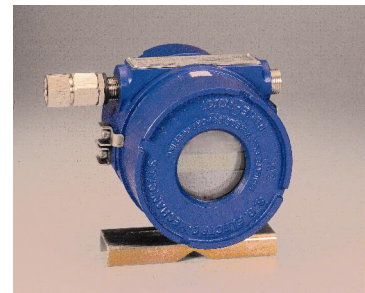
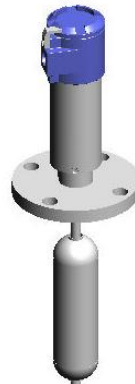
The Remote Indicator Unit 134-GQ collects Level, Temperature, Liquid Volume and Pressure data. Up to Eight Transmitters can be connected to 134-GQ. This unit stores the vessel strapping tables and the ASTM volume and density reduction tables. The density of LPG @15° C may be entered manually

The Remote Indicator 134-GQ computes the Liquid as well as Vapour volume and the mass of LPG in each vessel. While computing it takes care of the liquid equivalent of vapour above the liquid and gives the accurate stock in each vessel. Input of receipts and total volume dispensed (bottled) may be manually input to provide Loss-Gain Reports

Various Reports like Inventory Report, Present and Previous Record of Receipts, Level, Temperature, Gross Volume etc. are displayed on 134-GQ. A hard copy can be obtained on external 80 column serial printer, if connected.

The system does not require external computer or software for carrying out calculations or compilation of reports. All necessary software and hardware is built in to the Remote Indicator Unit. Built-in Liquid Inventory Management software gives the total stock including the liquid equivalent of the vapour.

The system is ideally suited for the LPG Storage Installations and LPG Bottling Plants.

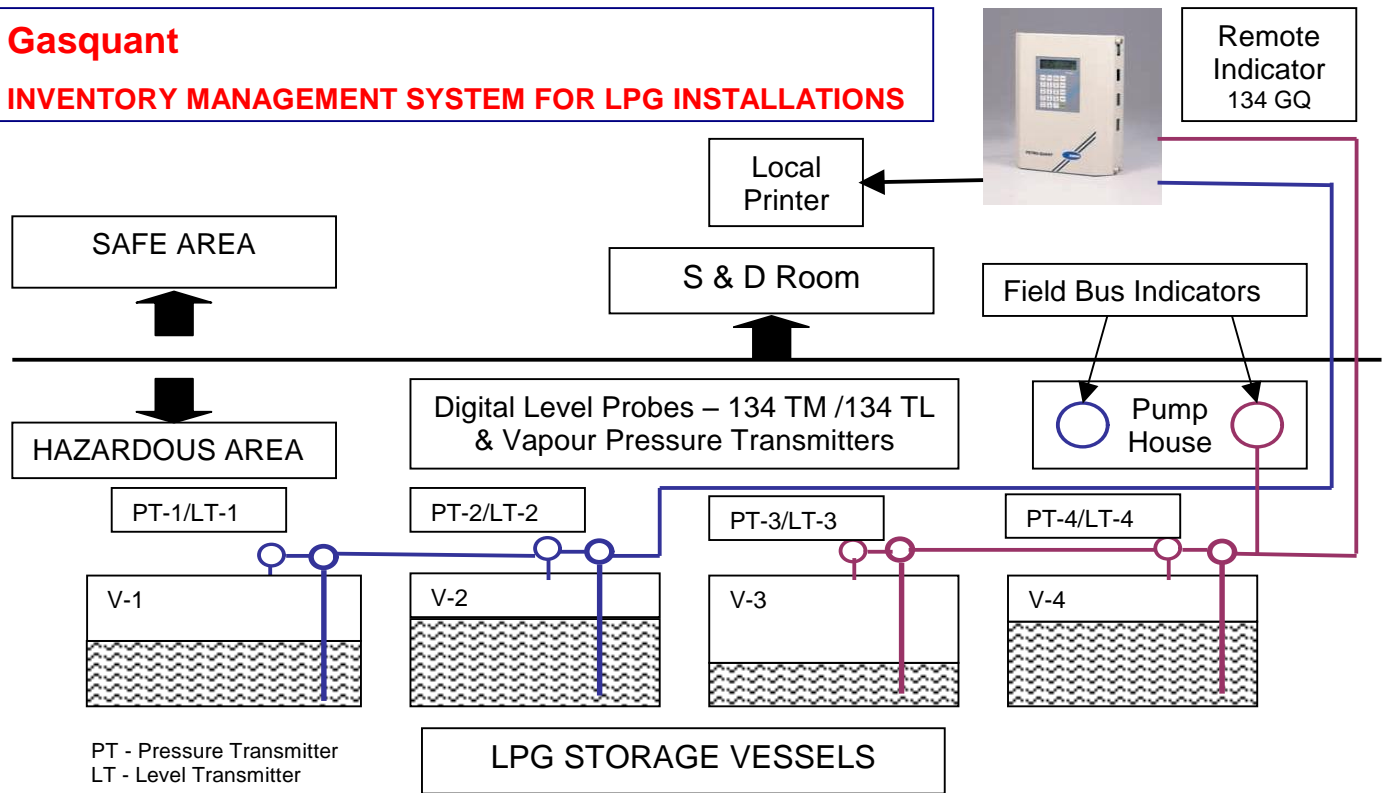


Features & Benefits

- Gives total stock – Liquid as well as Liquid Equivalent of Vapour
- Local, Pump-house & Remote Displays
- Displays Level, Percentage Volume & Alarm Status
- Audio-Visual Alarm
- Retrofit System – for installation on new as well as existing installations
- Simple and quick installation
- Single Source for all items
- All safety compliances met
- Stand alone system with Dedicated Hardware & Built-in Software
- Instantaneous, on line, hard-copy Reports

Gasquant

INVENTORY MANAGEMENT SYSTEM FOR LPG INSTALLATIONS



PT - Pressure Transmitter
LT - Level Transmitter

LPG STORAGE VESSELS

Typical Reports

Daily Loss-Gain Report

Sr.	OPENING		CLOSING	
	Vessel 1	Vessel 2	Vessel 1	Vessel 2
1				
2	2500	4570	3760	4260
3	26	23	30	29
4	302892	638846	509223	587949
5	1909	558	981	727
6		941738		1097172
7		2467		1708
8		944205		1098880
9	195040			
10		42600		
11	Expected	1096645	Actual	1098880
12				(+) 2235

Vessel-wise Inventory Report

PARAMETER	Vessel 1	Vessel 2	Vessel 3	Vessel 4
Level mm	472	918	1260	1503
Liquid Temperature °C	15.0	15.0	15.0	15.0
Vapour Pressure kg/cm ²	4.5	4.5	4.5	4.5
Vapour Temperature °C	20.0	20.0	20.0	20.0
Liquid Volume @ 15 °C	3919	9662	13785	15846
Liquid Eq. Vapour Vol.(Lit)	198	105	39	6
*Density @ 15 °C	0.56	0.56	0.56	0.56
Mass of Liquid kg	2155	5314	7561	8715
Mass of Vapour kg	108	57	21	3
Total Mass	2263	5371	7602	8718

***Continuous developments may necessitate changes without notice

LF-134-0803 R 02 08/2002

SBEM Pvt. Ltd.

39, Electronic Co-Operative Estate, Pune-Satara Road, Pune – 411 009 (INDIA)

Tel. – 91-20-4220505, 4223375 Fax – 91-20-4215670

Email – sbemsales@sbem.co.in, sbemsales@vsnl.com

Works: Bibwewadi Industrial Estate, 691/A/2, Pune-Satara Road, Pune-411 037(India) Email: mfg@sbem.co.in

Office MUMBAI
Tele. 91-22-5222824, 5242520
Fax 91-22-5230236
Email mumbai@sbem.co.in

CHENNAI
91-44-4451235, 4412947
91-44-4412947
chennai@sbem.co.in

NEW DELHI
91-11-6560647, 6969679
91-11-6969679
newdelhi@sbem.co.in