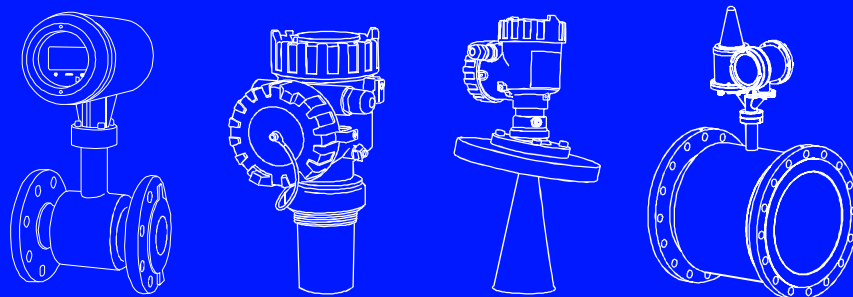


Partner For Level & Flow Measurement



Product Profile

Contents

Level Switches	4-5
Level Transmitters	6-7
Level Gauges	8-9
Flow Meters	10
Accessories	11-12
Marine Products	13
Analytical Solutions	14-15
Applications	16-17
Customer Appreciation	18
Our Client's Portfolio	19
Solutions For Applications	20
Product Overview	21
Site Installation	22
Flow Laboratory	23

About SBEM

SBEM was established in 1974 and is India's market leader in Level Instrumentation. With a futuristic approach and a warm beginning in providing Oil Companies, with tank Level Gauging Solutions, SBEM has evolved into an organization offering multiple products. SBEM Pvt. Ltd. has established itself as a FLOW MEASUREMENT Solutions Provider. It has now entered in Analytical Solutions for PHE, WTP Sectors. SBEM is an ISO 9001:2008 certified company with a DSIR approved R & D Centre. SBEM's core strength is its ability to custom design solutions for each application & customer's from every industry including :

Thermal Power

Steam Turbine, Turbo Generator, Condenser / Heat Exchanger, Condensate Polishing Unit (CPU), Coal Handling Plant (CHP), Ash Handling Plant (AHP), Fuel Oil Handling, DM Plant, Pre Treatment – Water Treatment Plant (PT-WTP), Effluent Treatment Plant (ETP), Cooling Tower and Fire Protection

Public Health Engineering

Over head tanks (OHT), Elevated storage reservoirs (ESR), Reservoirs and Distributed pipelines.

Indian Navy

Steel

Cement

Oil Refineries & Gas

Edible Oil

Vision:

To become the Preferred Partner and Solution Provider in the Process Control and Automation Industry

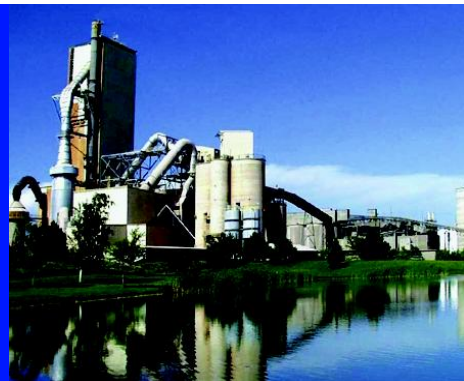
Mission:

To provide Continuous Value Addition to our Customers by offering Reliable, Cost effective and Customized Solutions

SBEM in a capsule:

- 100% indigenous Level Measuring instruments since 1978
- SBEM has aggressively moved into the Flow measurement domain & has Electromagnetic, Battery Operated & Ultrasonic Flow Meters on offer.
- One of first SSI's to obtain ISO 9001:2008 certification in India
- Largest number of installed Tank Farm Management Systems in India
- The only 100% indigenous Servo Gauge in 1992
- Integration of Radar Gauges (other makes) with SBEM Tank Farm Management systems
- Indigenously developed Phased Capacitance Level Transmitters and Ultrasonic Switches for Indian Naval Submarines
- Pioneered Magnetostrictive Probes for Automotive LPG Dispensing Stations (ALDS)
- Accurate Magnetostrictive Level Probes for Retail Outlet Automation
- Weight and measure model approval
- SIL 2 certified 139 Servo Gauge as per IEC 61508
- NABL accredited flow meter calibration laboratory as per ISO/IEC 17025 : 2005

What sets us apart from our competition is our extensive application engineering knowledge garnered over 3 decades + of successful supply to users installations in India and abroad



Side mounted Float 137EA/EY/C Top mounted Displacer 137D/P/L/Y

Product Features

- Weatherproof or Flameproof models
- Enclosure in cast aluminium
- Wetted parts in stainless steel or polypropylene
- Side mounted version with various float extensions like horizontal, vertical
- Top mounted switch for up to 3 set points
- Set point adjustability over entire measuring range (up to 20 m) by adjusting displacer position
- Different type of chambers for external mounting of the switch
- High temperature and pressure versions available
- "CE" declaration of conformity for side mounted versions

Applications 137- EA / EY / C

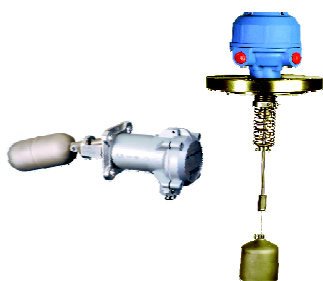
- Low / High alarm Interface level control.
- Differential level control
- Controlling level of liquids like Water, Oils, Fuels, Condensate, Acids, Alkalies, etc.

137- D/P/L/Y

- For liquids with density 0.5 to 1.2 gm/cc

Specifications

- **Switch Rating:**
5A @ 230 VAC Resistive
- **Temperature:**
Side mounted: 0°C to 180°C, -20°C to 300°C
Versions for very high temperature up to 450°C
Top mounted: 0°C to 150°C, 0°C to 350°C
- **Pressure:**
Side mounted: 30 Kg/cm² or 40 Kg/cm²
Top mounted : 10 Kg/cm² or 40 Kg/cm²
- **Process Connection:**
Flanged
- **Protection:** IP67



RF Admittance / Capacitance 114RFS

Product Features

- Integral and Remote mounting versions
- Surface or pipe mounting for remotely mounted versions
- Single point with adjustable time delay
- Probe failure alarm
- Sturdy Electrode to withstand impact due to clinkers
- Different Electrodes to enable use for various duties
- High temperature duties for solids-Upto 600°C
- "Coatsafe Probes" overcome effect of material build-up

Applications

- Designed for Solids with low dielectric - Fly Ash, Clinkers, wood chips, etc.
- For high temperature solid duties
- Cement, free flowing solids

114 MLS models for liquids

Specifications

- **Power Supply:** 115 or 230 VAC
- **Mounting:** Horizontal
- **Electrode Excitation:** 400 kHz
- **Process Connection:** 1" BSP or 1-1/2" BSP threaded
- **Cable Entries:** 1/2" NPT or 3/4" UNF
- **Protection:** IP67



Conductivity 130IC / RC

Product Features

- Uses field proven level control technique.
- Wide range of electrodes to suit various applications
- No calibration required
- For upto 5 set points
- Field settable fail safe feature
- Simple to install
- Surface or Pipe mounting options in remote version

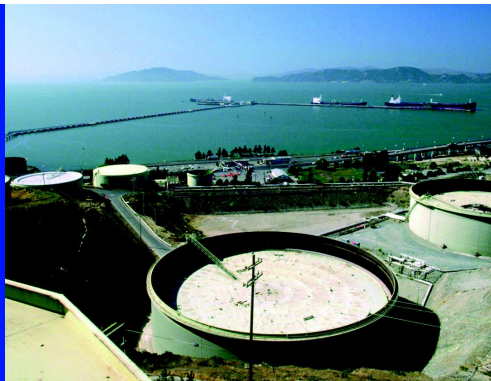
Applications

- In Non-fuming liquids like water
- Water bound solutions as corrosive liquids like acids and alkalies

Specifications

- **Power Supply:** 24 VDC or 110 / 230 VAC
- **Switch Rating:** 5A@230VAC / 115 VAC, 50 Hz
- **Temperature:** 0°C to 50°C
- **Relative Humidity:** 0-95%
- **Cable Entries:** 1 / 2" NPT, 3 / 4" UNF/ET
- **Protection:** IP67





LEVEL SWITCHES

Acoustic Rod Switch 136 ARS

Product Features

- Two wire or relay output version
- IS version available
- Compact size
- Operating pressure up to 40Kg/cm²
- Stainless steel housing
- No moving parts
- Direct or Reverse action selected by jumper

Applications

Marine

- Detection of water in all tanks, wells, separators, overfill pipes, etc.

Others

- Detection of light muds, viscous fluids
- Detection of creams, lotions, oils
- Detection of chemicals and pharmaceutical products

Specifications

- **Power Supply:** 12-30 VDC
- **Temperature:** 0°C to 90°C
- **Pressure:** Up to 40 kg/cm²
- **Process Connection:** Threaded 1" BSP or 1" NPT
- **Output:**
 - Two wire current output- 5 or 14 mA settable or
 - Four wire current and contact output
- **Protection:** IP67



Paddle Level Switch 135LC

Product Features

- Weatherproof enclosure
- Cast aluminum polyurethane painted.
- Separate cable entries for supply & control.
- Lip seal to prevent ingress of dust particles in to main enclosure.
- Fixed / adjustable shaft extensions to suit the functional requirement.
- Optional air purging facility.
- High temperature stand off available.

Applications

- It controls the level of free flowing powders or granules or solids in the hoppers, bins and silos

Specification

- **Switch Rating:** 24VAC or 230VAC, 5A or 230VAC, 10A
- **Temperature:** 0°C to 100°C
100° To 400°C (with HTSO & Sindano Flange)
- **Pressure:** Atmospheric
- **Protection:** IP67



Top Mounted Float 134S

Product Features

- Single or dual set points
- Contact type
- Alarm with relay output
- Suitable for top mounting
- Minimum connection size of 2 1/2" NB
- Weatherproof & Flameproof enclosure

Applications

- High Level Alarm for LPG Bullets
- Hi or Low Level Alarms

Specifications

- **Hysteresis:** 10mm
- **Pressure:** 16kg/cm²
- **Operating Temperature:** -25 to +100 °C
- **Measuring Range:** Up to 3000 mm
- **Density Range:** 0.45 g/cc minimum
- **Protection:** IP67





Pulse Radar 138 C / K For Liquids-Solids

Product Features

- Two wire
- Variety of antennas to suit application
- Measuring range up to 70 m
- 6 GHz & 26 GHz Versions
- High accuracy up to ± 3 mm
- Low dead band
- Small beam angles of up to 4°
- Dual chamber construction separates electronics from terminals
- Aiming device helps focusing the beam for use in solids
- Integrated air purge connection for use in dusty atmospheres

Applications

Solids:

- Coal, cement, fly ash, clinker, gypsum, storage tanks or process vessels in dusty media, with or without aiming device
- Storage silos, hoppers
- Bunkers

Liquids:

- Level measurement specially for corrosive media
- Edible Oil

Specification

- **Power Supply:** 14 - 30 VDC
- **Temperature:** Up to 200°C
- **Pressure:** Up to 16 kg/cm^2
- **Process Connection:** Threaded or flanged
- **Output:** 4-20 mA, 2 Wire, HART
- **Protection:** IP67



Ultrasonic ULTRAMATE 136 SS ULT

Product Features

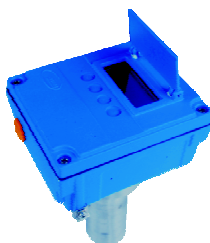
- Two wire
- 8 line Graphical display
- Fully temperature compensated
- Stainless steel sensor
- Magnetic key operation
- No site calibration required
- Measuring Range: 4m or 8m
- Accuracy: 0.2% of measuring range

Applications

- For Liquids
- Volume can be displayed
- May be used for open channel flow measurement
- Temperature Indication

Specifications

- **Power Supply:** 14 to 30 VDC
- **Temperature:** -10 to 60°C
- **Pressure:** Atmospheric / upto 5 kg/cm^2
- **Process Connection:** Threaded, SO flange
- **Output:** 2 Wire, 4 - 20 mA
- **Protection:** IP67



Ultrasonic ULTRAMATE 136ULX

Product Features

- Two wire
- 8 line Graphical display
- Optional HART output with 2 wire units
- Fully temperature compensated
- Stainless steel sensor
- Magnetic key operation
- No site calibration required
- Measuring Range: 4m or 8m or 10m
- Accuracy: 0.2% of measuring range

Applications

- For Liquids
- Volume can be displayed
- May be used for open channel flow measurement
- Temperature Indication

Specifications

- **Power Supply:** 14 to 30 VDC
- **Temperature:** -10 to 60°C
- **Pressure:** Atmospheric
- **Process Connection:** Threaded
- **Output:** 2 Wire, 4 - 20 mA, HART Output
- **Protection:** IP67





LEVEL TRANSMITTERS

Hydrostatic pressure 103HPT

Product Features

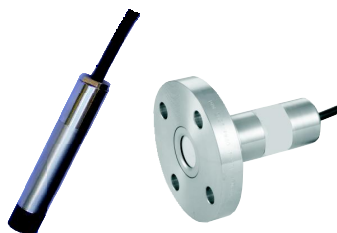
- Submersible transmitter -Two wire
- Highly accurate and long-term stable sensor elements
- Compensated for temperature and air pressure fluctuations
- Stainless Steel Housing
- < 22 mm diameter can be used even in 1" Bore pipes.
- No site calibration required

Applications

- Level indication of tanks
- Water level measurement in rivers and Bore wells

Specifications

- **Power Supply:** 14 - 30 VDC
- **Temperature:** 0 to 70°C
- **Measuring Range:** Up to 20 m of WC
- **Output Signal:** 4 - 20 mA
- **Accuracy:** +/- 0.5% FSD



Rate of Flow, 104ROF Loss of Head , 104LOH

Product Features

- Two wire
- Low cost solution for filter beds
- No site Calibration required
- All still pipes & accessories for fitment are supplied
- Higher accuracy with multipoint calibration
- All entries are protected through password in EEPROM
- Self diagnostic function i.e. error message on display

Applications

104 LOH

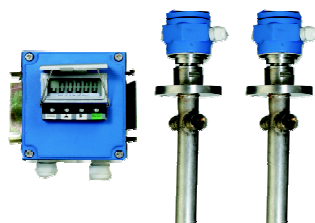
- Differential Level Measurement (Loss of Head) for water in filter beds

104 ROF

- Measurement of flow rate in the inlet or outlet of filter house or filter beds, effluent treatment plants & other similar applications
- Open channels

Specifications

- **Power Supply:** 24 VDC
- **Accuracy:** ± 2% of probe length
- **Display:** 6 digit LCD display
- **Temperature:** 0 to 60°C(Max.)
- **Pressure:** Atmospheric
- **Cable Entries:** 1/2" NPT or 3/4" UNF(F)



Capacitance 103CLT

Product Features

- Two wire transmitter
- Level to Volume conversion with strap
- Wide range of electrodes to suit various duties
- Programming and calibration in sealed condition of unit
- Higher accuracy for multipoint calibration
- Up to 10 point calibration is possible
- Remote as well as integral versions are available
- Two version for conductive and Non-conductive liquids
- IS version available

Applications

- Power plants
- Refinery
- Petrochemical plants
- Chemical plants
- Turbine cooling systems in power plants
- Raw / Pre Water treatment plants
- Effluent treatment plants
- Sewage treatment plants

Specifications

- **Power Supply:** 24 VDC
- **Temperatures:** 0°C to 55°C
- **Humidity:** 0-95% max.
- **Display:** 6 digit LCD Display
- **Accuracy:** ± 2% of FSD
- **Protection:** IP67



LEVEL GAUGES



Float & Board 131

Product Features

- Wetted parts available in SS304 / Ss316.
- Suitable for installation on "Tank in Service"
- Large numerals visible from a distance
- Simple installation and commissioning
- Liquid seal for trap vapour for highly evaporating material
- Indicator rolls on gauge board with the help of nylon rollers
- Supplied with all installation accessories
- Floats of various materials & sizes are available to suit specific requirements

Applications

- Top mounted version designed specifically for sump application is available
- Number of configurations to suit various tanks underground & above ground, Cone Roof, Sump, Floating Roof, Horizontal Cylindrical, Reservoir, etc.

Specifications

- **Float Diameter:** 300 or 400 mm.
- **Process Connections:** 1 1/2" threaded / Flanged
- **Tank Height:** Suitable for 2 to 20 mtr.



Float & Tape (ATLG) Based Tank Gauging System

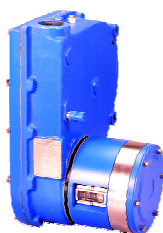
Product Features

- Level Measurement for Petroleum storage tanks in Refineries, Marketing Terminal or Oil storage tanks, Fire Water Tanks
- Accessories for remote Control / Indication
- Solutions for Level measurement of clear liquids in large bulk storage tanks (Cone Roof, Floating Roof, Underground)
- **Mounting:** Side or top
- **Ranges:** 0-8 m, 0-12 m, 0-16m, 0-24 m
- **Resolution:** 1 mm
- **Accuracy:** ± 2 mm with 400 mm dia. float

Automatic Tank Level Gauge (133ATLG)

Accessories

- **Limit switch assembly (133LA)**
Switches (2 point or 4 point)
- **Two wire transmitter (133TS)**
4-20 mA proportional to level
- **Smart Tank data Transmitter (133STDT)**
Transmission of level & temperature data
- **Liquid seal assembly (133LS)**
For blanketed tanks
- **Communication Interface Unit (CIU)**
Control room unit for communication with the tank level gauges
- **Tank farm Management Software (SBTFMS)**
Versatile Inventory Management programme



Servo Operated Tank Gauging System

Product Features

- Accurate Level, interface level, temperature & density measurement in one instrument.
- Useful for automation in Refineries, Marketing Terminal /depots — Storage Tanks Strategic Reservoirs, Caverns.
- LPG Servo Gauge for Level, Temperature Measurement for Spheres & Bullets.
- Display at Local, at Grade Level, Remote possible
- Hybrid Servo Gauge provides Online Density Measurement.
- RS 485 Communication for Communication Interface Unit (CIU) & SBTFMS software for inventory report, trends, alarm monitoring
- SIL - 2 Certified current & Relay output.

Servo Gauge (139 M)

Accessories

- **Portable programming Unit (139PPU)**
For programming of Servo Gauge
- **Calibration chamber (139CC)**
- **Tank side Indicator controller (139TSIC)**
Visual indication of level and volume at tank side
- **Communication interface unit (133CIU / 133RCU)**
Control room unit for communication with the tank level gauges (133 CIU with CMA supervisor systems on standard modbus protocol)
- **Average temperature indicator (133TMP)**
For measurement of temperature
- **LPG Servo Gauge**
- **Tank Inventory Management Software (SBTFMS)**
Versatile Inventory Management programme
- **Custody Transfer Approval :**
Weight & Measures as per OIMLR85 standard.



LEVEL GAUGES

Magnetostrictive Level Probe 134TM with Fill Point Indicator 134H/134FPI For ALDS (Automotive LPG Dispensing Stations)

Product Features

- Reliable and accurate level and interface level measurement in underground and above ground horizontal cylindrical tanks
- Applicable for pressurized / atmospheric storage tanks containing LPG, motor spirit, high speed diesel, superior kerosene oil
- Remote Indicator - Transmitter enables display of level, interface level, volume, % volume at the fill point.

Applications

- 100 point strapping table for volume indication
- Flameproof and weatherproof enclosure
- Intrinsically safe probe
- Fill point indicator, 134 FPI for viewing the tank data at fill point
- Up to 4 tanks can be grouped and connected to one Fill Point Indicator
- **Sales Room Indicator, 134 SRI** helps viewing tank data in control room
- Up to 8 tanks (two groups of 4 each) can be connected to one 134 SRI
- Optional SMS facility - Tank data at regular intervals, alarm conditions

Specifications

- **Accuracy:** +/-1mm
- **Resolution:** +/-0.1mm
- **Pressure:** Upto 16 kg/cm²
- **Temperature:** 25 to 100°C
- **Measuring Range:** up to 3 m
- **Density Range:** 0.45 to 1.2gm/cc
- **Protection:** IP67



Tank Farm Management System, SBTfMS

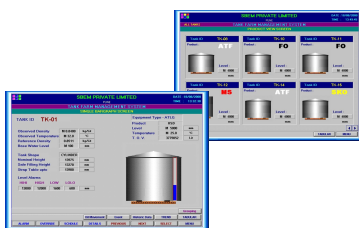
Tank Farm Management System Software package is a powerful and versatile inventory management programme for bulk storage tanks for refineries and marketing of petroleum products.

Product Features

- Real time tank gauging data such as level, temperature, water interface and pressure
- Real time inventory calculations
- Liquid and mass calculations of vapor in LPG
- Volumes are calculated as per strap table entry. Cylindrical and spherical tanks are also supported.
- Reliable alarm handling - Receive alarm summary, alarm log and alarm event log
- Leakage alarms
- Reports - Schedule report times. Reports may be saved as pdf.
- Historical data storage
- Audit log for events
- Tank & Group views
- Numerical & graphical displays
- System capability up to 128 tanks through 2 Communication Interface units & 200 tanks with up to 4 Communication Interface Units.

Applications

- Refineries
- Independent Tank terminals
- Marketing Terminals
- Fuel Depots
- Pipeline terminals
- Petrochemical Industry
- Bio fuel storage
- Aviation Fuel Depots



Lube Oil Customised SCADA Development

Product Features

- Monitor tank farm up to any no. of tanks
- Display of Level / Volume (with the help of strapping tables which relate the liquid level to volume)
- Display of mass (manual entry of density)
- Display of temperature
- Easy installation - Narrow beam Pulse Radar, 138K56 allows installation practically anywhere in the tank
- Proven in various industrial environment
- Graphical Display
Single tank at a time with all parameters data. Selection of Tank No. to view a particular tank data
- Data logging and Trending
- Operator friendly software
- SMS Alerts (Time / Event Driven)





FLOW METERS

Electromagnetic Flow Meters 151MFM

Product Features

- Measurement of flow rates of electrically conductive liquids/water.
- Flanged and Wafer versions available.
- The liquid flow is measured with no obstructions and no pressure drop.
- Rubber / PTFE / Neoprene/Hard Rubber/ Polyurethane Lined Sensors
- GSM/ GPRS feature
- Inbuilt Data Logger
- Graphical LCD backlit / 2 line LCD backlit display
- Excellent long term accuracy
- Bi-directional flow measurement
- Empty pipe detection
- Selectable flow units
- Ex-proof Version

Applications

- Used for Water & waste Water in closed Pipe flow.

Specification

- **Power Supply:**
Universal 85-265 VAC, 45-65 Hz / 24 VDC
- **Measuring Range:** DN 15 - DN 2000
- **Pressure:** 6 / 10 / 16 kg/cm²
- **Minimum conductivity of measured liquid:** 20 µS/cm
- **Electrode material:** SS 316;
Optional-SS 316L, Hastelloy C, Titanium or Tantalum
- **Output:**
Frequency, pulse and current outputs.
Optional RS 232 and RS 485 outputs.
Optional HART O/P
Optional GSM / GPRS connectivity
- **Protection:**
IP67 for Integral Version and
IP67 or IP68 for Remote Version



Battery Operated Electromagnetic Flowmeters 151 MFM B

Product Features

- Measurement of flow rates of electrically conductive liquids/water.
- Flanged versions.
- The liquid flow is measured with no obstructions and no pressure drop.
- Rubber / PTFE / Neoprene/Hard Rubber/ Polyurethane Lined Sensors
- GSM/ GPRS feature
- Inbuilt Data Logger
- Graphical LCD
- Excellent long term accuracy
- Bi-directional flow measurement
- Empty pipe detection
- Selectable flow units

Applications

- Water and Waste Water
- Irrigation and Dewatering

Specification

- **Power Supply:**
3.6V Battery Pack Max. 5 yrs life
- **Measuring Range:** DN 15 - DN 600
- **Pressure:** 6 / 10 / 16 Kg/cm²
- **Minimum conductivity of measured liquid:** 50 µS/cm
- **Electrode material:**
SS 316, SS 316L, Hastelloy C, Titanium
- **Output:**
Opto-mos relay pulse output, 50 Hz max.
RS 485 (Optional) / GSM/GPRS (Optional)
- **Protection:**
Sensor / Converter - IP 68



** For 15 sec sampling

Ultrasonic Flow Meter 153UCW / BTU Meter

Product Features

- Measurement & detection of volumetric flow rates of most Liquids
- Hand held (Portable) / Wall mounted converter
- Easy to install
- Measuring accuracy ±1%
- Wide range of pipe sizes
15 mm - 6000 mm
- Totalized Flow

Clamp-on type Sensors

Applications

- Drinking water, raw water, waste water
- Sewage/ drainage water with < 2% of Total suspended solids
- Boiler feed water
- Pipeline leak detection

Specifications

- **Power Supply:**
153UCW: 85 to 230 VAC
153UCH: Rechargeable battery powered with 230 VAC
- **Measuring Range:**
15 - 6000 mm pipe diameter
- **Pressure:** 10 kg/cm²
- **Output:**
153UCW: 4-20 mA + Pulse + Relay
- **Output:**
153UCW: Temperature (Pt100) and analog input for heat flow and pressure measurement
- **Protection:** IP67

Ultrasonic Clamp-on Wall mounted Parasonic 153UCW





ACCESSORIES

Machine To Machine Interface 200 - M2M

Product Features

- Upto 16 Field devices (8 Modbus, 4 Analog & 4 Digital)
- 24 VDC Transmitter supply (Optional)
- Weatherproof IP67 as per IS / IEC 60529
- Alarm Monitoring – Programmable
- **Smart diagnostics**
 - MODBUS communication errors notification
 - Analog over & under current notification
- Support for all data types in MODBUS RTU Communication
- Support for upto 32 registers/parameters
- Seamless integration with SCADA using MODBUS TCP or SBEM proprietary protocols
- M2M Config Utility - Easy to use GUI for quick setup
- **SMS Feature**
 - Periodic data SMS & Alarm, error alert
 - Min to max interval: 5 min to 31 days
 - Max mobile no users: 10
- **Built in Data logger**
 - Min-max no of parameters enabled: (1-40)
 - Max-min no of records stored: (34K-2K)

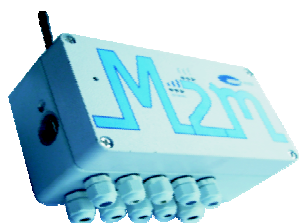
Applications

Various applications in monitoring for several industries like PHE, Water Treatment, Power, Cement, Chemical and others.

- Water monitoring applications in distribution & treatment
- Tank Level Monitoring, Remote Monitoring And Automatic Meter Reading

Specifications

- **Power Supply:** Universal 85 to 260VAC, 50-60 Hz
- **Communication:** GSM / GPRS
- **Temperature:** 0 to +55°C
- LED Indication for Network Strength and Power Supplies
- USB Port for data retrieval on flash drive or host PC.



Water Balancing SCADA (WBS)

SBEM's Water Monitoring/Balancing system is used in large industrial setups (Power, Cement, Chemical etc.) for reliable online monitoring of water withdrawals from water sources, consumptions & thereby calculating losses.

Product Features

- Real time monitoring of instantaneous flow rate and cumulative flow.
- Reliable Measurement and wireless data transfer considering remote locations.
- Seamless integration with M2M using standard MODBUS TCP or SBEM proprietary protocol (ASCII)
- TCP/IP or UDP transport layer.
- Displays the Flow rate trends & reports of the field devices with selectable Date/Time ranges.
- Separate Consumptions are provided for Industrial / Domestic Purpose.
- Expandability in System. New Stages, Clusters, Devices can be added as per user requirement.
- Multi Location monitoring to view data / reports simultaneously.
- Other process instruments (level, pressure etc.) can be integrated with the system.
- Provision for Virtual Flow Meters.

Applications

- Water and Waste water Management (WTP).
- Effluent Treatment Plant (ETP).
- Public Health Engineering (PHE).
- Elevated Storage Reservoirs & Distributed Pipeline Monitoring



Tank Level Indicator, 103HTL

Product Features

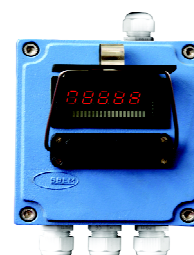
- Weatherproof IP67 housing
- Field mounted indicator for display of tank data at tank bottom
- Powers and connects with any transmitter
- Bright LED display
- Site programmable
- Up to 4 configurable relays
- Display of Volume with 64 point level vs. volume strap table
- Bargraph display of % level or % volume
- Differential output with selection of model with dual inputs
- Ready to mount with wall/pipe mounting kit

Applications

- Overhead tanks and sumps
- Horizontal storage tanks

Specifications

- **Power Supply:** 110 VAC / 230 VAC, $\pm 10\%$, 50Hz
- **Input:** 4-20 mA (Single / Dual)
- **Display:** 5 digit, 10 mm seven segment LED
- **Accuracy:** $\pm 0.1\%$ of FSD
- **Range:**
 - Std. 0 – 100%
 - Optional -1999 to 9999
- **Output:**
 - Up to 4 Nos. potential free relay outputs
 - Retransmission 4-20 mA
 - MODBUS RTU RS 232/ RS 485
- **Transmitter supply:** 24 VDC
- **Mounting:** Wall / Pipe





Digital Process Indicator 176

Product Features

- Keeps the control room informed about the tank data
- Panel mounted indicator – controller with optional 4 alarm/ control relays & display
- Powers and connects with any transmitter
- Bright LED display of level, instantaneous flow and % Volume
- Optional MODBUS RS 232/ RS 485 output
- Differential output with selection of model with dual inputs
- Dust proof enclosure with epoxy powder coating
- Tamper proof key board programming

Applications

- Overhead tanks and sumps
- Storage tanks

Specifications

- **Power Supply:** 110 VAC / 230 VAC, $\pm 10\%$, 50Hz
- **Input:** 4-20 mA (Single / Dual)
- **Display:** 4 digit, 12.5 mm high red LED
- **Accuracy:** $\pm 0.1\%$ of span
- **Range:**
 - Std. 0 – 100%
 - Optional -1999 to 9999
- **Output:**
 - Up to 4 Nos. potential free relay outputs
 - Retransmission 4-20 mA
 - MODBUS RTU RS 232 or RS 485
- **Transmitter supply:** 24 VDC
- **Dimensions :**
 - Front Facia (mm) : 96X96
 - Cut out (mm) : 92X92
 - Depth (mm) : 110



Flow Indicator Totaliser 191

Product Features

- Displays flow of the open channels from sensor input
- Panel mounted indicator – controller with optional 2 alarm/control relays (one for instantaneous flow and one for totalised flow) and display
- Powers and connects with any transmitter used for flow measurement
- Bright LCD display of instantaneous flow and totalised flow
- Optional MODBUS RS 232/ RS 485 output
- Dust proof enclosure with epoxy powder coating

Applications:

- Open channels

Specifications

- **Power Supply:** 110 VAC / 230 VAC, $\pm 10\%$, 50Hz
- **Input:** 4-20 mA
- **Display:** 2 line LCD display
- **Accuracy:** $\pm 0.1\%$ of span or ± 1 digit
- **Range:**
 - Std. 0 – 100%
 - Optional -1999 to 9999
- **Output:**
 - Up to 2 Nos. potential free relay outputs
 - Retransmission 4-20 mA
 - MODBUS RTU RS 232 / RS 485
- **Transmitter supply:** 24 VDC
- **Dimensions :**
 - Front Facia (mm) : 96X96
 - Cut out (mm) : 92X92
 - Depth (mm) : 110



Phase Capacitance Level Sensor, CLS/ CLR/ PCLS Indication and Display System, IDU

Product Features

CLS

- Continuous Level measurement up to 20 meters
- Sensor Protection by Stainless steel hose
- Quick and easy installation and calibration
- Flexible sensor to suit any tank shape
- Mounting may be adapted to suit other usage
- Maintenance – free. No moving parts
- Sealed and rugged stainless steel construction
- Suitable for high pressure up to 15 kg/cm²
- Microprocessor based intelligent electronics
- Two wire system; Power and Signal on same wires

IDU

- Indicator and Display Unit – IDU for six tanks
- Displays % Level and % Volume
- Panel mounted unit with bright LED seven segment display
- Auto scrolling / manual tank data display selection
- Offline diagnosis and Programming
- Remote indication by slave unit-RDU
- Automatic changeover in case of IDU failure

Applications

- EKM Class Submarines
- Conductive liquids with low /medium viscosity like water, water bound solutions
- Fresh water / Salt water
- Non-conductive liquids like mineral oil





PRODUCTS FOR MARINE DUTIES

Ultrasonic Level Switch ULS/ ULR/ SULS

Product Features

- Detects presence or absence of liquids
- For high or low level alarms
- Selectable Fail Safe High (FSH) / Fail Safe
- Low installations
- Mounting may be adopted to use other usage
- Can be mounted vertically or horizontally
- Rugged stainless steel or titanium construction
- Sealed construction for high pressure up to 45 Kg/cm²
- Inbuilt sensor health check facility
- May be interfaced direct to PLC

Applications

Marine & Naval:

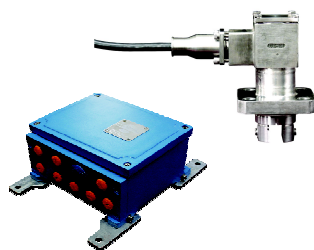
- Detection of water Sea water, fuel oil, etc.

Others:

- Detection of light muds, viscous fluids
- Detection of creams, lotions, oils
- Detection of chemicals And pharmaceutical products

Specifications

- **Power Supply:** 18-30 VDC
- **Temperature:** -10°C to 55°C
- **Pressure:** Up to 45 kg/cm²
- **Process Connection:** Flanged
- **Output:** Open Collector
- **Tripping Point:** ± 5 mm
- **Protection:** IP68



Fuel Water Sensors

Function of the Fuel Water Separation sensor is to identify change in flowing medium (i.e fuel to water and vice versa) in a pipeline or tank

Product Features

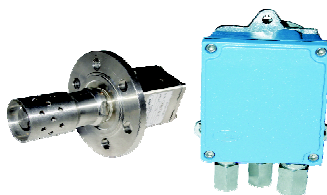
- Rugged construction
- Type tested for naval and marine use
- Remote Level Alarm

Applications

- To check the level of fuel - Sea water boundary on board the ship
- LSHS Diesel & Sea water interface

Specifications

- **Power Supply:** 220 V, 400 Hz, ± 10%
- **Output:** Relay energised / de-energised in presence / absence of liquid
- **Max Pressure (wet side) at Sensor:** 40 Kg/cm²
- **Max Pressure at cable side:** 5 Kg/cm²
- **Max Temperature:** 0 to 50 °C
- **Set Value (for signaliser) & indicate rising / Falling:** 6 mm from the lower end of the sensor
- **Accuracy:** ± 10 mm
- **Protection:** IP 68



Tank Gauging and Flood Warning System, 171TGD + FWS

- Integration of systems & sensors from one source
- Tank Gauging
- Ballast Monitoring Water ingress detection & alarm (SOLAS)
- Flood Warning Systems

Product Features

- Integration of systems & sensors from one source
- MULTIPLE PARAMETERS - Level, Flow, Temperature & Pressure - Switches & Transmitters
- Interface for IPMS
- Data acquisition and display
- Alarm monitoring
- Historical trending
- Remote Monitoring - Multiple locations
- Display of volume, percentage volume and other possible parameters
- Multiple Local Display Units (LDU)
- Certified for use in hazardous areas
- Marine Type Approvals

Applications

- Trim & Heel Tanks, Black Water, Lube Oil, Sludge Tanks, Fresh Water, Fuel Oil, Bilge Water, Dirty Oil, Grey Water, AVCAT





Online pH Analyser 141 pH

Product Features

- Easy To Install mounting options provide optimum versatility with a one-piece construction with process threads in two places.
- Analog Output is available in loop powered 2 wire or in 4 wire transmitter mode.
- Auto Temperature Compensation is available using a NTC10K resistor. Manual temperature compensation is also available
- Easy Calibration is possible with standard buffer solutions in simple menu guided steps making site re-calibration quick and efficient.
- User Friendly UI with menu based programming, LCD with Backlit feature.

Applications

- Water and Industrial Water Treatment Plants :
- Drinking water
 - Municipal Water treatment
 - Waste Water treatment

Specifications

Sensor & Controller

- **pH Measurement Range:** 0 to 14 pH
- **Accuracy:** 0.1 pH
- **Temperature Range:** 0 to 50°C
- **Temp Accuracy:** $\pm 0.5^\circ\text{C}$
- **Analog Output:** Configurable 4-20mA
- **Load Resistance:** 500 (Max), DC24V
- **Power Supply:** 220VAC/110VAC/24VDC



Low Range Turbidity Analyser 143 TUR L

Product Features

- Complete Integrated System with a sensor, defoaming system and a multi function controller with analog, digital and MODBUS communication outputs.
- Accurate Readings are ensured with its continuously flowing sample, cross-mazing defoaming system and tungsten lamp as a white light source.
- Convenient Cleaning with its easy to clean optics and defoaming system ensures minimum downtime during maintenance .
- User Friendly UI with menu based program.
- 3.5"320x240 TFT true color display with backlit feature.
- Multiple Outputs available with 2 channels 4-20mA output, RS485 MODBUS & 3 digital outputs.

Applications

- Turbidity measurement in the inlet / outlet of water treatment plant.
- Turbidity measurement for Filter Monitoring, Filter back washing, Drinking water networks

Specifications

- **Measurement Range:** 0 to 100 NTU
- **Accuracy:**
 - < 40 NTU : $\pm 2.5\%$ of Full Scale
 - > 40 NTU : $\pm 5\%$ of Full Scale
- **Analog Output:** (400 Ohms@24V DC) 2 channel 4-20 mA
- **Digital Output:** (50mA 30VAC/DC) - 3nos programmable for open / close / pulse
- **Communication:** MODBUS RTU RS485
- **Power Supply:** AC 230V
- **Operating Temperature:** 0 to +50°C



High Range Turbidity Analyser 143 TUR H

Product Features

- Submersible Sensor Design with built-in optical maintenance brush / wiper.
- Direct Connectivity with PC, PLC, various modems like Zigbee/CDMA/GPRS/WIFI etc. Internet using RS485 Digital Communication Port
- Settable Period / Preset Timer for Cleaning Optical Window

Applications

- Drinking Water
- Waste Water

Specifications

- **Measurement Range:** 0.01 to 4000 NTU
- **Accuracy:**
 - < 0-100 NTU : $\pm 2.5\%$ of Full Scale
 - > 100-4000 NTU : $\pm 5\%$ of Full Scale
- **Light Source:** 850 nm (Infrared light)
- **Sample Flow:** < 3 m/s.
- **Cable Length:** Standard Length 10m
- **Power Supply:** DC 24V $\pm 15\%$
- **Pressure Range:** ≤ 6 bar
- **Working Environment:** 0 to 40 °C



ANALYTICAL SOLUTIONS

Online Chlorine Analyser 145 CLO

Product Features

- Amperometric Design with Chlorine, pH, Pt1000 sensors with an advanced compensation algorithm results in an accurate measurement of Chlorine. No Reagents required
- Multiple Outputs available with 2 channel 4-20mA outputs, RS485 MODBUS and selectable 3 digital outputs
- User Friendly UI with menu based programming, LCD with Backlit feature.

Applications

- Applications in Chlorine measurement for several Industries like PHE, Water Treatment, Swimming pool, Spa, Water Fun facility.
- Chlorine & Free Chlorine in Drinking water
 - RO Feed Water
 - Product Water Quality
 - Monitoring Chlorine in Final Treatment

Specifications

Measurement Range:

- **Free Chlorine:** 0-2 ppm or 0-20 ppm
- **CLO2:** 0-2 ppm or 0-20 ppm
- **pH:** 0-14 • **Temp.:** 0-99.9 °C (Pt1000)

Accuracy:

- **Chlorine:** ±10% of Full scale
- **pH:** ±0.1 • **Temperature:** ±0.5°C

Outputs:

- **Analog Output:** (500 Ohms@24V DC)
2 nos. 4-20 mA programmable for free chlorine, ClO2, Temp, pH
- **Digital Output:** (50mA 30VAC/DC)- 3 nos programmable for free chlorine, ClO2, Temp, pH, timing output
- **Communication:** MODBUS RTU RS485

Others:

- **Power Supply:** 220VAC ±10%, 50 Hz
- **Required Flow Rate:** (250 - 350) mL/min
- **Installation:** Wall / Panel Mounting
- **Working Temp.:** 0 to 50 °C



Dissolved Oxygen Analyser 144 DOT

Product Features

- Polarographic (Amperometric) Method utilised is most popular method used industrywide in continuous Waste Water Treatment Systems
- Automatic Temperature Compensation is provided by the inbuilt temperature element in the DO sensor and the temp. compensation algorithms in the controller.
- Manual Compensation for atmospheric pressure and salinity.

Applications

- Waste water treatment plants
- O2 control in the aeration basin
 - Process water treatment and monitoring
 - Status monitoring of drinking water (oxygen enrichment, corrosion protection, etc.)
 - Water quality monitoring in rivers, lakes or seas
 - Online Dissolved oxygen monitor and control in the environmental monitoring

Specifications

Measurement Range:

- **Dissolved Oxygen:** 0 to 20 ppm
- **Temperature:** 0 to 60°C

Accuracy:

- **Dissolved Oxygen:** ±0.30 ppm
- **Temperature:** ±0.5°C

Outputs:

- **Analog Output:** (500 Ohms@24V DC)
1 no 4-20 mA
- **Digital Output:** (50mA 30VAC/DC)
- 2nos with hysteresis setting

Others:

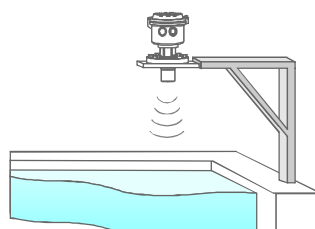
- **Power Supply:** DC24±4V
- **Senor Material:** 316L, Stainless Steel
- **Lowest Flow Rate:** 0.3 m/s.
- **Temperature of Media:** 5 to 45 °C



APPLICATIONS

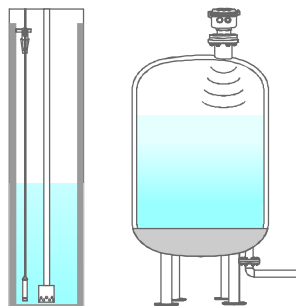


Open Tanks / Reservoirs



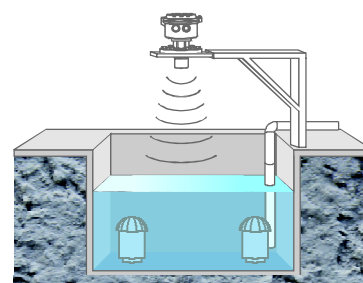
- Ultrasonic, 136ULX
- Capacitance, 103 CLT with still well
- Hydrostatic, 103 HPT with still well
- Pulse Radar, 138

Tank Level Monitoring



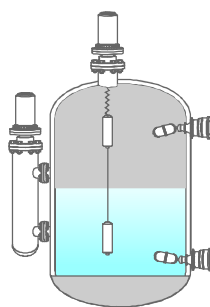
- Ultrasonic, 136ULX
- Capacitance, 103 CLT
- Hydrostatic, 103 HPT
- Pulse Radar, 138

Underground Sump Level & Pump Control

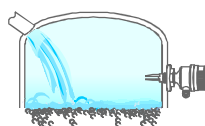


- Ultrasonic, 136ULX
- Capacitance, 103 CLT
- Hydrostatic, 103 HPT
- Pulse Radar, 138

High & Low Level Alarms Limit Detection / Pump Control Run Dry / Pump Protection

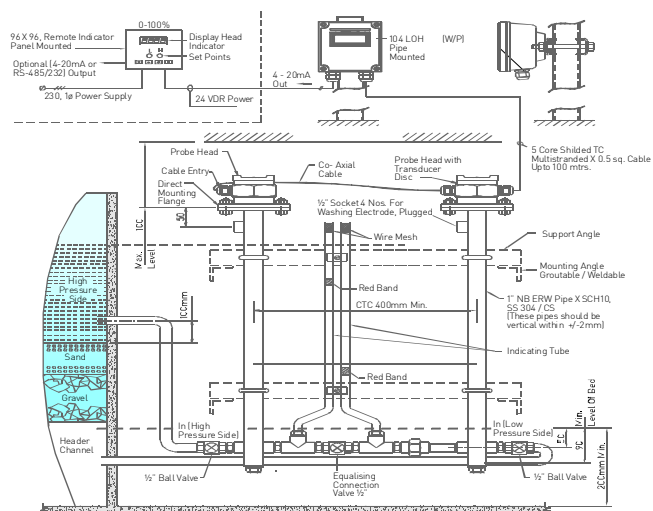


Overfill Protection



- Capacitance, 114 MLS
- Float, 137EA / EY / C
- Displacer 137D / P / L
- Conductivity 130IC / RC
- Ultrasonic rod, 136URS

Gravity Filter Beds

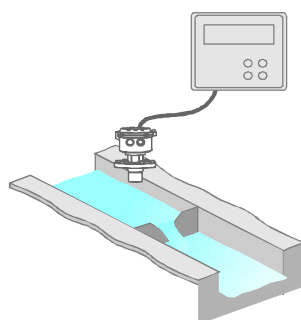


- Capacitance based Loss of Head Indicator Transmitter, 104LOH



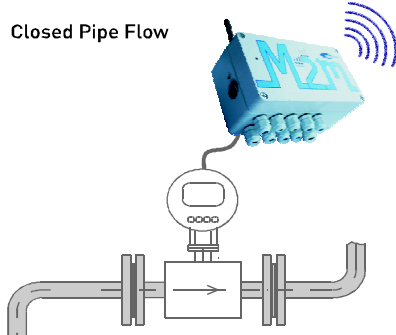
APPLICATIONS

Open Channel Flow



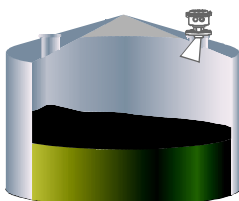
- Ultrasonic, 136ULX
- Capacitance, 104ROF

Closed Pipe Flow



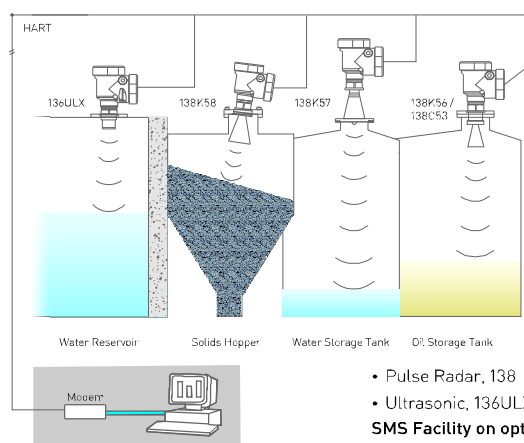
- Electromagnetic, 151MFM
- Ultrasonic, 153UFM

Bulk Solids



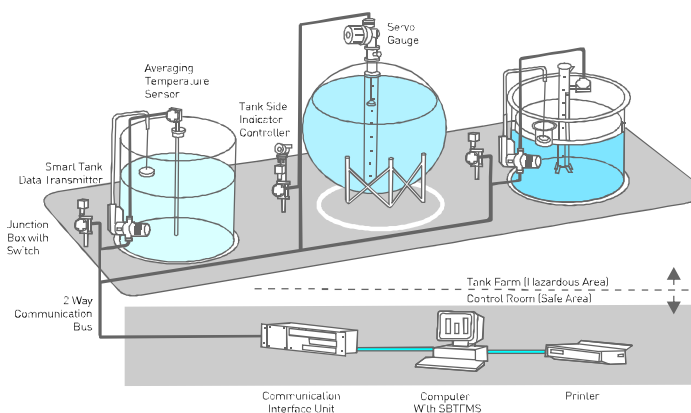
- Pulse Radar, 138

Typical Tank Farm Management System



- Pulse Radar, 138
- Ultrasonic, 136ULX
- SMS Facility on option**

Typical Tank Inventory Management System Servo Gauge / Float & Tape based



- Servo Gauge, 139M
- Automatic Tank Level Gauge (Float & Tape) 133ATLG with accessories
- Temperature Sensor, 133TMP
- Tank Farm Management System, SBTMS

Customer Appreciation- Our Success Stories

Our biggest motivation is customer satisfaction. Words of appreciation from our customers not only make us happy, but drive us

for further innovation and better service. A token of appreciation from our customers- our hard earned reward.

Date: 6.Jan.2010

To Whomsoever It May Concern:

KONE
Elevators Escalators

Regd. Office & Factory
KONE Elevator India Private Limited
50 Varanasi Road
Agnanibakam
Chennai - 600 095
Tel: +91 44 26538801 (6 lines)
Fax: +91 44 26539922

This is to certify that SBEM make Electromagnetic Flow meter (Model -151) Is working properly from the date of installation on 12.10.09.

Kone elevator India pvt ltd.

R. Azhakaran
MAINTENANCE MANAGER

JSW Energy Limited

Village-Nandiwade, Post-Jaigad,
Tel. & Dist.- Ratnagiri - 415 614
Maharashtra, India.
Ph: 02357 - 242501 to 513
Fax: 02357-242508
Website: www.jsw.in

Date: 16.05.13

TO WHOM SO EVER IT MAY CONCERN

This is to certify that M/s SBEM Pvt. Ltd., Pune has installed 1 No. Electro Magnetic Flow Meter for line size 600 mm at Nivali Pump House dtd. 31/12/2012.

The performance of Electro Magnetic Flow Meter is found working satisfactorily since installation.

D. Tanakiraman
For JSW ENERGY LIMITED
(D. Tanakiraman)
GM (I & E)

KSK Water Infrastructures Private Limited

Registered Office:
KSK Water Infrastructures Pvt. Ltd.,
Plot No. 10, Sector 10, Phase 1,
Gurgaon, Haryana - 122 002
Tel: +91 122 4000000
Fax: +91 122 4000000

July 18, 2014

TO WHOM SO EVER IT MAY CONCERN

We hereby confirm that we have procured Electromagnetic Flow Meters from SBEM Pune, for our 6 X 600MM KSK Mahanadi Power Company Limited executed through on NPI, KSK Water Infrastructures Pvt. Ltd. in Chattisgarh. These Flow meters of various sizes from 1000mm to 1800 mm were in scope of our PFC, Zuhert Engineering Company vide their Purchase Order No. ZUE/JP/FP/AS/KWIP/13-14/51894-Y/2013/1490 placed on SBEM.

Some of these Flow Meters have been installed, the performance of Flow Meters & services provided by SBEM are satisfactory till date.

This Certificate is being issued on request of SBEM, however does not absolve SBEM from any contractual responsibility.

K. S. Srinivasan
Authorised Signatory
For KSK Water Infrastructures Pvt. Ltd.

JSW Steel Limited

Vijayanagar Works :
P.O. Vidyannagar, Toranagallu,
Dist Bellary - 583 275, Karnataka, India
Ph: 08395 - 250 120 - 130
Fax: 08395 - 250 138/250 665
Website: www.jsw.in

08/05/2013

To whomsoever it may concern

This is to certify that the SBEM Model 151 Electromagnetic Flow Meter (Size: 1200NB) is installed & commissioned at our Bellary site from last 06 months.

It was purchased under
PO No. : JSW/VJNR/R/UTI/33011/114201 Dt. 11th Aug. 2011
Quantity : 02 Nos
Application : Water

The performance of the Electromagnetic Flow Meter is continuously monitored and is found satisfactory from the day of commissioning.

This confirmation is being issued on request of SBEM & it does not absolve SBEM from any contractual commitment in future.

We wish to continue the same services.

For JSW Steel Ltd.,

V. S. Srinivasan
Veeshekar K,
AGM, Utility Dept.
09449598317

JINDAL Part of O.P. Jindal Group

Regd. Office :
Jindal Mansion,
S A. Dr. G. Deshmukh Marg,
Mumbai - 400 028,
Phone : 022-2351 3000
Fax : 022-2352 6400

TATA Marcopolo

04th Sept 2012

To whomsoever it may concern

This is to certify that the SBEM Model 151, Electromagnetic Flow Meters were installed & commissioned at our Dharwad (Karnataka) address in March 2011.

PO Details:
PO No. : 7500000741
PO Date : 31.07.2010
Quantity : 10 Nos

The performance of the Electromagnetic Flow Meters are continuously verified and found satisfactory.

We wish to continue the same services.

For Tata Marcopolo Motors Ltd

K. V. Ram
K.V. Ram
Head-Plant Engineering
Mob: +91-9243291747

Linde Engineering India Private Ltd

Plot No. 10, Sector 10, Phase 1, Gurgaon, Haryana - 122 002
Tel: +91 122 4000000
Fax: +91 122 4000000

To whomsoever it may concern

M/s SBEM Pvt. Ltd. has successfully completed our purchase order No. 002JA02290 dated 10.07.2013 and sub-PO dated 21.04.2014 and sub-PO dated 14.08.2015 for Tank Farm Management System (TFMS), TEFMS Meter consisting of three Gauges, Model H50M - 20 numbers, Temperature sensors & Software for Process & Utility facilities at imp site in India (BHEL) in Pauri, Karnataka, India.

This order is valued at Rs. 1.00 Crores.

The system has been supplied as per the approved specification, within the specified delivery period and commissioned in August 2014.

The performance of the above system is found to be satisfactory.

Amarendra Tiwari
Amarendra Tiwari
DCM - Plant/Instrument

Arpan Shrivastava
Arpan Shrivastava
DCM - Project/Installation

Date: 15.07.2015

ADANI

TO WHOMSOEVER IT MAY CONCERN

This is to certify that the SBEM make Pulse Radar, Model 138 K58 are commissioned on coal bunker and fly ash silo @ M/s Adani Power Ltd., Mundra on 12 July 2010.

The performance of the transmitters is continuously verified and found satisfactory till date.

For Adani Power Ltd.

Rajesh M. Bhanarkar
Rajesh M. Bhanarkar
Sr. Manager (O & M) C & I
Mobile: 09687660404

Our Clients Portfolio

Ingenious solutions from Indigenous source

Our products are used across multiple industries and clients. From raw water to sewage and treated water, SBEM has an extensive presence in the market. Illustrations are given below:

Power	BHEL	NTPC	Reliance	MAHAGENCO	ESSAR	Adani
	LANCO	Jindal Power	India Bulls	Tata Power	Coastal Energen	DVC

Water & Waste water	Thermax	VATECH	Ion Exchange	PRAJ	Driplex	BGR Energy
---------------------	---------	--------	--------------	------	---------	------------

Cement & Steel	Ambuja	India Cements	Aditya Birla	SAIL	Tata Steel	JSW
----------------	--------	---------------	--------------	------	------------	-----

Chemical, Sugar & Food	Deepak Nitrite Limited	Shree Renuka Sugars Ltd.	MECTECH	Cargill	Desmet ballestra	Ruchi Soya
------------------------	------------------------	--------------------------	---------	---------	------------------	------------

Oil, Refineries & Gas	IOCL	BPCL	HPCL	ONGC	VANAZ	EMERSON
	Indian Strategic Petroleum Reserves Limited		ONGC Petroleum Additions Limited		IOT Infrastructure & Energy Services Ltd	

Turnkey Automation	L & T	Honeywell	ABB	Alfa Laval	ThyssenKrupp	GE
--------------------	-------	-----------	-----	------------	--------------	----

Consultants	EIL	Avant-Garde	TCE	Mecon	DCPL	
	Fichtner	Jacobs	M.N.Dastur	Mott MacDonald	Uhde India	Toyo Engg.

Indian Navy & Marine	Mazagaon Dock Limited (MDL)	Ship Building Centre (SBC)	Defence Machinery Design Establishment (DMDE)		INS Sindhu dhvaj	INS Sindhukesari
----------------------	-----------------------------	----------------------------	---	--	------------------	------------------

Your Applications & Our Solutions

Thermal Power

Application	SBEM Solution
Coal Bunkers	Pulse Radar, 138
Travelling Water Screens	Hydrostatic Pressure Transmitters, 103 HPT, Ultrasonic Transmitters, 136 ULX
Gravity Filter beds	Loss of Head Level Indicator - Transmitters, 104 LOH
Flow Measurement	Electromagnetic Flow Meters, 151 MFM
Various Tanks	Float, displacer, conductivity, capacitance type level
Ash Slurry	Ultrasonic Level Transmitters, 136 ULX, Pulse Radar,
Ash Hoppers	RF Admittance type level switches, 114 RFS

Public Health Engineering

Application	SBEM Solution
Gravity Filter beds	Loss of Head Level Indicator - Transmitters,
Sumps at Water Treatment	Ultrasonic Level Transmitters, 136 ULX
ESR at various locations	Ultrasonic Level Transmitters, 136 ULX
Raw water intake, Distribution channels	Ultrasonic Flow Meters, 153 UFM; Electromagnetic Flow Meters, 151 MFM
Sewage Treatment Plants	Open Channel Flow Meters, 136 ULX

Water & Waste Water Treatment / Distribution

Application	SBEM Solution
Raw Water Intake	141pH, Turbidity 143 TURL, Disolved Oxygen 144 DOT, Electromagnetic Flowmeter 151 MFM
Coagulation	141pH, Turbidity 143 TURL, Conductivity Controller 142COC
Chlorine Injection	Free Chlorine 145 CLO, 141pH
Effluent Treatment Plant	141pH, Conductivity Controller 142COC
Aeration Basin	Disolved Oxygen 144 DOT, 141pH, Conductivity Controller 142COC
Secondary Clarifier	141pH, Conductivity Controller 142COC
Swimming Pool and Spa	Free Chlorine 145 CLO, 141pH

Steel Industry

Application	SBEM Solution
Gas Holder	Float & Tape Level Gauge with Two Wire Transmitter, 133 ATLG + TWT
Iron Ore/ Direct Reduced Iron (DRI)	Ultrasonic Level Transmitter, 136 ULX; Pulse Radar, 138
Back filter hopper	Capacitance Type Level Switch, 114MLS
LPG Tanks	Servo Gauge, 139 M
Fuel Oil Tanks	Float & Tape Level Gauge with Two Wire Transmitter, 133 ATLG + TWT

Oil, Gas & Refineries

Application	SBEM Solution
Cone Roof & Floating Roof Tank	Float Operated Microprocessor based Level Transmitter & Indicator 133/STD/CIU/SBTFMS Servo Operated Microprocessor based Level Transmitter & Indicator 139/TSIC/CIU/SBTFMS
Spheres / Mounded Vessels	Magnetically coupled Level Switch 137 L / 137 P Servo Operated Microprocessor based Level Transmitter & Indicator 139/TSIC/CIU/SBTFMS
Mounded Vessels and Underground Bullets in Auto LPG Stations	Displacer Level Switch 137 L / 137 P Magnetostrictive Level Transmitter & Indicator, 134 TM / 134 H / 134 S / 176
CAVERNS	Servo Operated Microprocessor based Level Transmitter & Indicator 139/TSIC/CIU/SBTFMS

Cement Industry

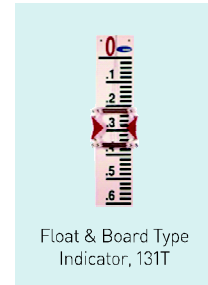
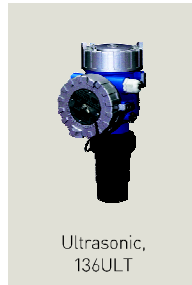
Application	SBEM Solution
Coal Bunkers	Pulse Radar, 138; Paddle Type Level Switch, 135 LC
VRM Feed Belt Disc / VRM Lime Stone	
Coal Mill	
Kiln & Cooler ESP	Capacitance Level Switch, 114 MLS; Paddle Type Level Switch, 135 LC
Bauxite Storage	
Limestone Storage	
Fly Ash ESP Hoppers	
Cement Bins	Pulse Radar, 138;
CM CLR Hoppers	Pulse Radar, 138; Paddle Type Level Switch, 135 LC
Lime Stone, Iron Ore, Bauxite, Lignite,	
Silo HLA	
Kiln Feed Bin	
Water Balancing System	151 + SCADA

Edible Oil

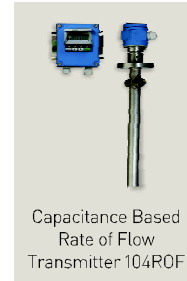
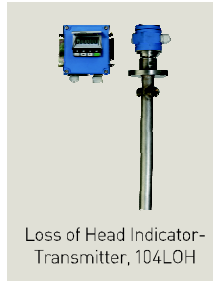
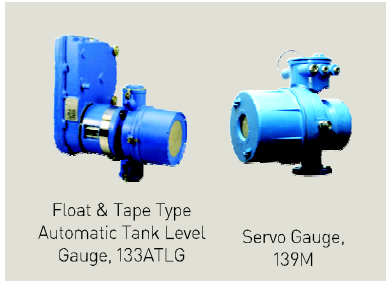
Application	SBEM Solution
Raw material storage	Paddle Level Switch, 135 LC; Float type Level Switch, 137EA; Top mtd. Displacer Type Level Switch 137 D
Cleaning, Dehulling	Paddle Level Switch, 135 LC; 135 VS; Capacitance Level Switch, 114 MLS
Crush, Cooking, Expelling	Capacitance Level Switch, 114 MLS; Float type w Level Switch, 137EA; Top mtd. Displacer Type Level Switch 137 D
Refining, Deodorising	Vibrating Fork type Level Switch, 135 VLM; Side mounted Float type Level Switch, 137EA; Top mounted Displacer Type Level Switch 137 D; Capacitance Level Switch, 114 MLS
Oil Storage	
Hydrogenation	
Liquid Extraction	

Product Overview

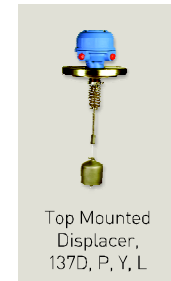
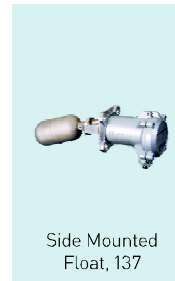
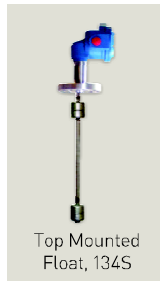
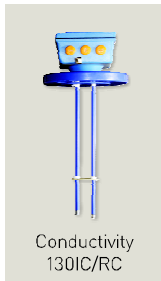
Level Indicators & Transmitters



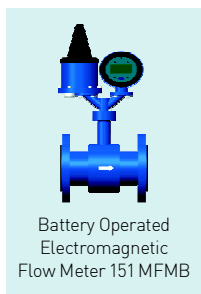
Open Channel Flow Meters



Level Switches



Closed Pipe Flow Meters / Accessories



Analysers

Tank gauging solutions

- Servo (139M) based, Float & Tape type level gauges (133ATLG) based, Magnetostrictive (134TM) based, etc.
- Tank farm management systems with field gauges, control room unit and SBTfMS software
- Site survey, project planning, detailed engineering, execution, installation & commissioning, support & training

• Solutions for solids and liquids

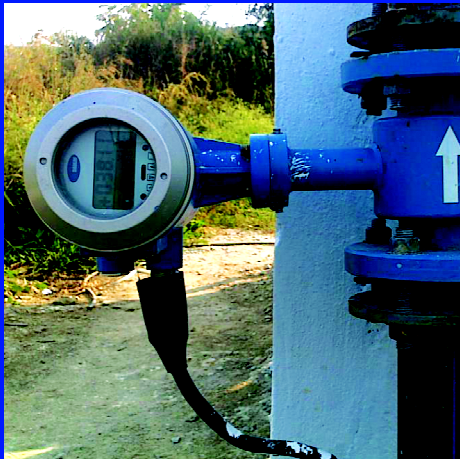
• Multiple technologies

• Multiple segments

• Multiple parameters

• Multiple applications

Site Installations



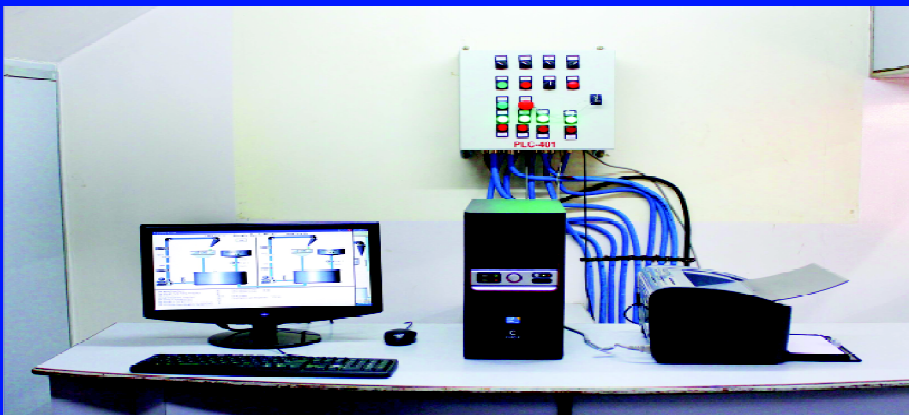
SBEM site installations ensure the highest standards & quality of measurements

Flow Laboratory



Certificate No.:C-1247

Laboratory accredited by
NABL as per ISO/IEC 17025:2005
Lab No. : C-0828





SBEM Pvt. Ltd.

Head Office: 39 Electronic Co-operative Estate, Pune-Satara Road, Pune - 411 009

Tel. +91 20 24527400, 24220505, Fax +91 20 24215670, Email: sales@sbem.co.in

Works : 691A/2, Bibwewadi Industrial Estate, Pune-Satara Road, Pune - 411 037.



Certificate No.: C-1247 ISO 9001:2008



Pune
Tel +91 20 24527400
pune@sbem.co.in

Mumbai
Tel +91 22 27823601
mumbai@sbem.co.in

Delhi
Tel +91 11 26560647
newdelhi@sbem.co.in

Chennai
Tel +91 44 24911235
chennai@sbem.co.in

www.sbem-india.com

LF-300-0813-RO2

